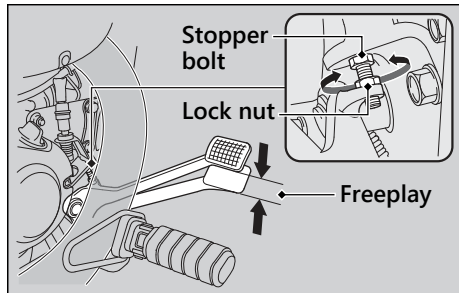


Adjusting the Rear Brake Pedal Height

VT750C

The stopper bolt is provided to allow adjustment of the pedal height.

1. Place your motorcycle on its side stand on a firm, level surface.
2. Loosen the lock nut and turn the stopper bolt.
3. Tighten the lock nut and check the freeplay.



Inspecting the Rear Brake Pedal Freeplay

VT750C

1. Place your motorcycle on its side stand on a firm, level surface.
2. Measure the distance the rear brake pedal moves before the brake takes hold.

Freeplay at the tip of the brake pedal:

13/16 - 1 3/16 in (20 - 30 mm)

Make sure the brake rod, brake arm, spring and fastener are in good condition.