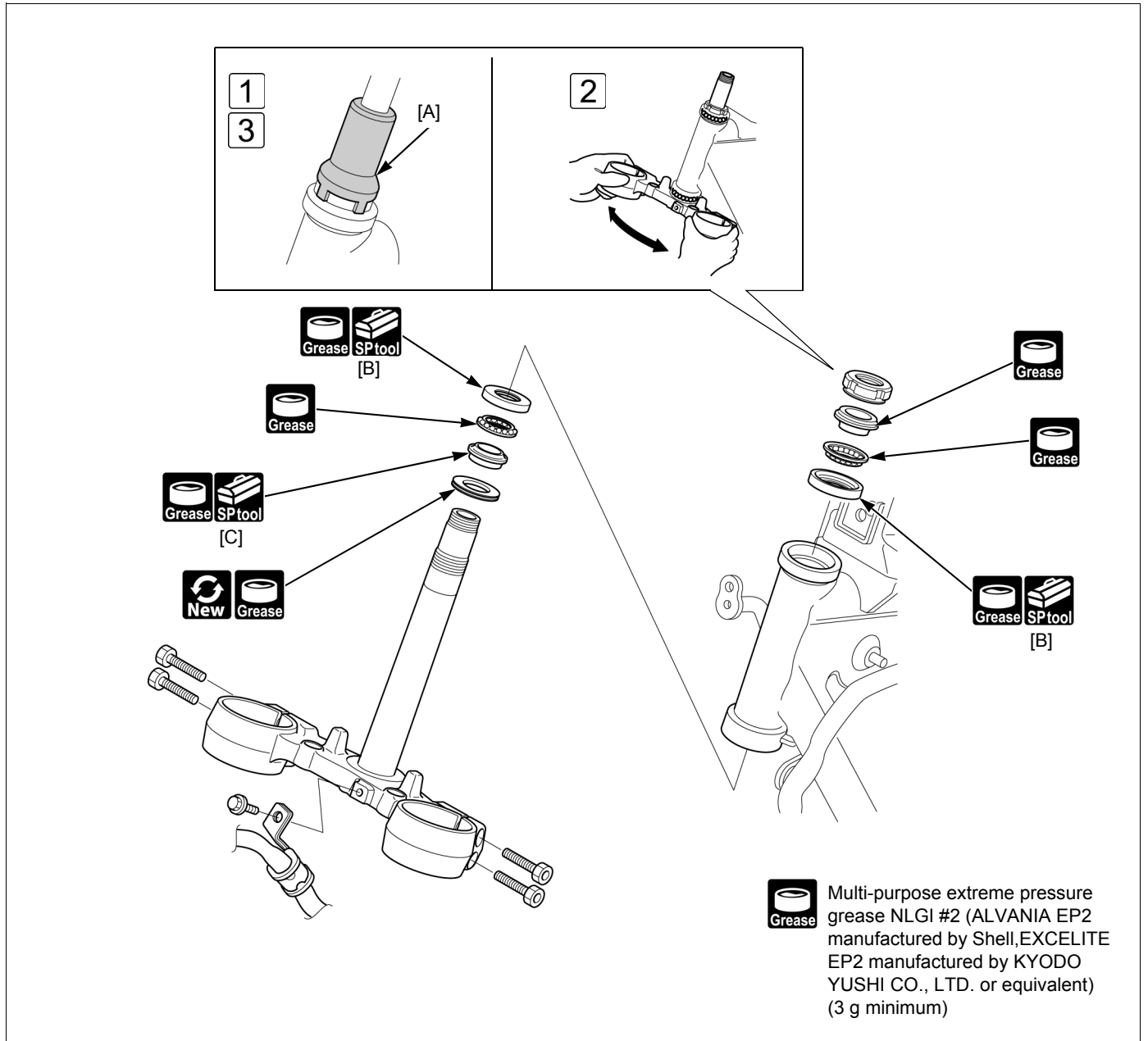




BOTTOM BRIDGE



- Fork →3-17
- STEERING STEM:
[A] Steering stem socket wrench: 07916-3710101



- STEERING STEM BEARING:
[B] Ball race remover shaft: 07GMD-KS40100



- STEERING STEM BEARING:
[C] Steering stem driver: 07946-4300101
- STEERING STEM:
[A] Steering stem socket wrench: 07916-3710101

- **1** Install the steering stem adjusting nut. Hold the steering stem and tighten the steering stem adjusting nut to the initial torque using the special tool.

TORQUE: 24.5 N·m

- **2** Turn the steering stem lock-to-lock several times to seat the bearing. Completely loosen the top thread.

- **3** Tighten the steering stem adjusting nut to the specified torque using the special tool.

TORQUE: 2.4 N·m



- Steering disassembly/assembly and inspection